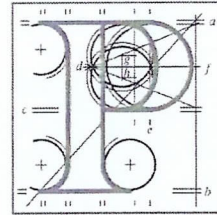


Our Case Number: ABP-317742-23



**An
Bord
Pleanála**

Bray Retailers Group (BRG)
c/o Liam McGarry
19 Main Street
Bray
Co. Wicklow

Date: 12 October 2023

Re: BusConnects Bray to City Centre Core Bus Corridor Scheme
Bray to Dublin City Centre.

Dear Sir,

An Bord Pleanála has received your recent submission in relation to the above-mentioned proposed road development and will take it into consideration in its determination of the matter. Please accept this letter as a receipt for the fee of €50 that you have paid.

Please note that the proposed road development shall not be carried out unless the Board has approved it or approved it with modifications.

The Board has also received an application for confirmation of a compulsory purchase order which relates to this proposed road development. The Board has absolute discretion to hold an oral hearing in respect of any application before it, in accordance with section 218 of the Planning and Development Act 2000, as amended. Accordingly, the Board will inform you in due course on this matter. The Board shall also make a decision on both applications at the same time.

If you have any queries in relation to this matter please contact the undersigned officer of the Board at laps@pleanala.ie

Please quote the above-mentioned An Bord Pleanála reference number in any correspondence or telephone contact with the Board.

Yours faithfully,

Sarah Caulfield
Executive Officer
Direct Line: 01-8737287

HA02A

Teil (01) 858 8100
Glao Áitiúil LoCall 1800 275 175
Facs Fax (01) 872 2684
Láithreán Gréasáin Website www.pleanala.ie
Ríomhphost Email bord@pleanala.ie

64 Sráid Maoilbhríde 64 Marlborough Street
Baile Átha Cliath 1 Dublin 1
D01 V902 D01 V902

From: BRAY RETAILERS GROUP,
C/O 19 MAIN STREET,
BRAY.

AN BORD PLEANALA [STRATEGIC INFRASTRUCTURE DIVISION]

| | |
|-------------------------|-----------|
| AN BORD PLEANALA | |
| LDG- | 067078-23 |
| ABP- | 317742-23 |
| 05 OCT 2023 | |
| Fee: € | 50 |
| Type: | CHA |
| Time: | 14:37 |
| By: | HAND |

Dear Sir/Madam,

BRG welcomes the proposals so far but these would require substantial modifications to become acceptable. BRG acknowledges the competing and complementary necessities and usages; pedestrians, buses, taxis, cars, haulage vehicles, cycles, E cycles, cargo bikes, scooters and E scooters.

BRG references Brunnandern Strasse at Bern in Switzerland: a five spoke roundabout with the busiest spoke clearly marked for general and cycle use with the overarching message; alertness and responsibility for oneself and others no matter how busy or potentially hazardous the area in question is.

ROUNDBABOUTS [R/A]:

1 Retention of the Wilford R/A as at present [three spokes] and not a conversion to a signalled T junction as planned.

2 A R/A at the Old Connaught intersection land available [four spokes].

3 A R/A at Industrial Yarns/Lidl [three spokes] with just one spoke to serve the presents school road and the Lidl/smaller units, with land available.

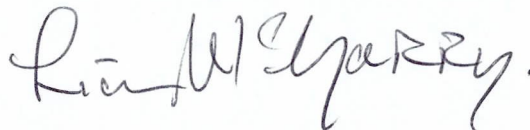
4 A R/A at Supervalu/Dwyer Park or near the base of Bray Bridge to service new housing and Lower Dargle Road [four spokes]. PLEASE REFER TO ENCLOSED MAPS

The four, if not five, roundabouts would enhance fluidity coming into Bray North, the first set of traffic lights to be encountered would be at the Main Street / Royal Hotel corner, in effect right on the edge of the central business district.

BRG also propose sensible signage to nudge and condition those users exiting minor and side streets and houses to become accustomed to left hand turns only --- going with the flow!
PLEASE REFER TO ENCLOSED MAPS

BRG is at present preparing a holistic traffic management plan for Bray as a whole with a grand total of 21/22 roundabouts [present stock being 10] and an extra 3800 to 4200 linear metres of bus lanes in Bray South. Also mooted is a round Bray bus service scheme with extension to huge new housing stock at Woodbrook and Shanganagh and a possible further extension to Shankill village [church].

I remain, for and behalf of BRG,



Liam McGarry. 6/10/2023

Frank Power [chair] c/o 8 Main St. Bray, Liam McGarry [secretary] /co 19 Main St. Bray, John Keyes c/o Winstons Main St. Bray, Michael Bannon [Jnr.] c/o Bannons, Main St. Bray

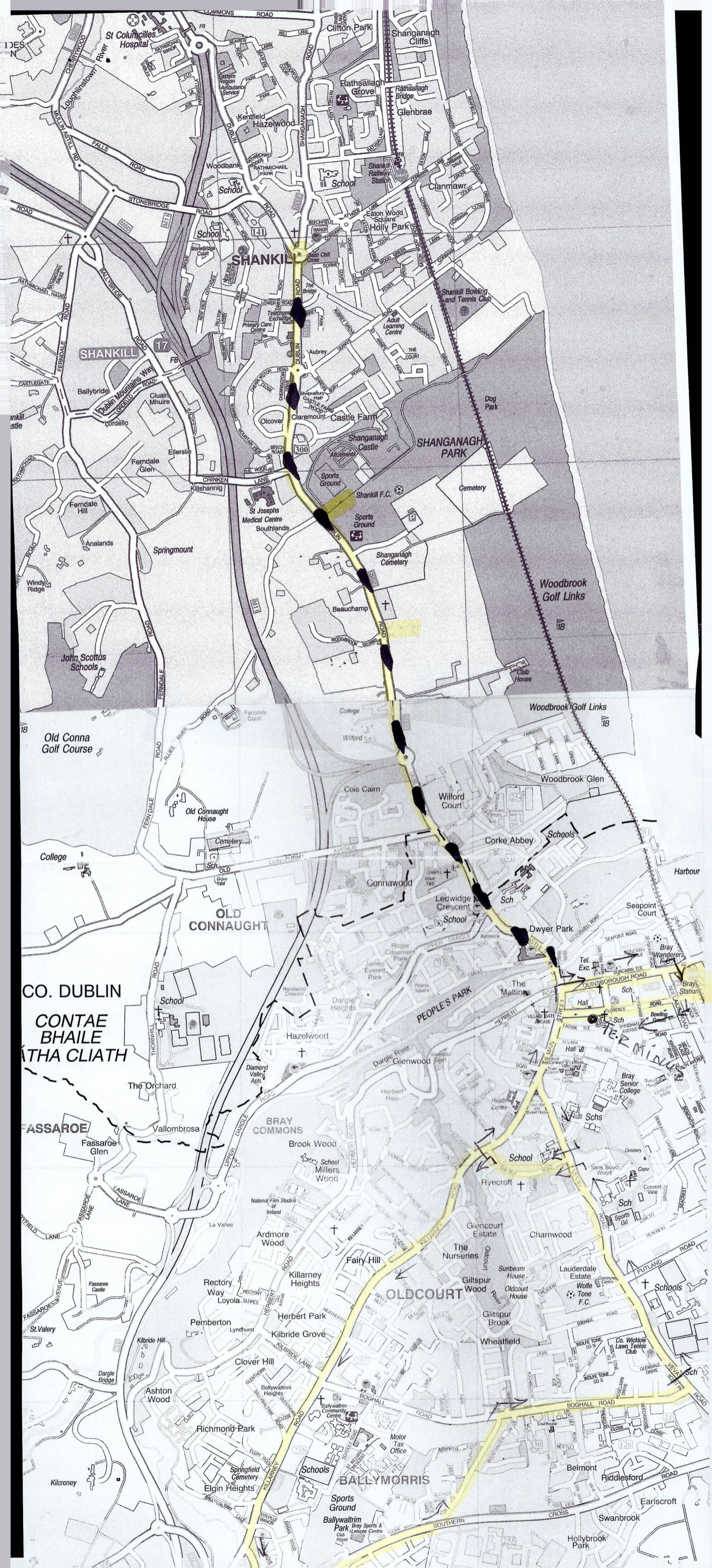
€50 CHEQUE ENCLOSED

ROUND BRAY BUS SERVICE (ANTI ENVIRONS)

1st PHASE - CLOCKWISE IN BRAY

2nd " - ANTICLOCKWISE " "

3rd " - TO/FROM SHANKANAGH / WOODBROOK
(WITH POSSIBLE EXTENSION TO SHANKILL.)



SHANKILL 17

OLD CONNAUGHT

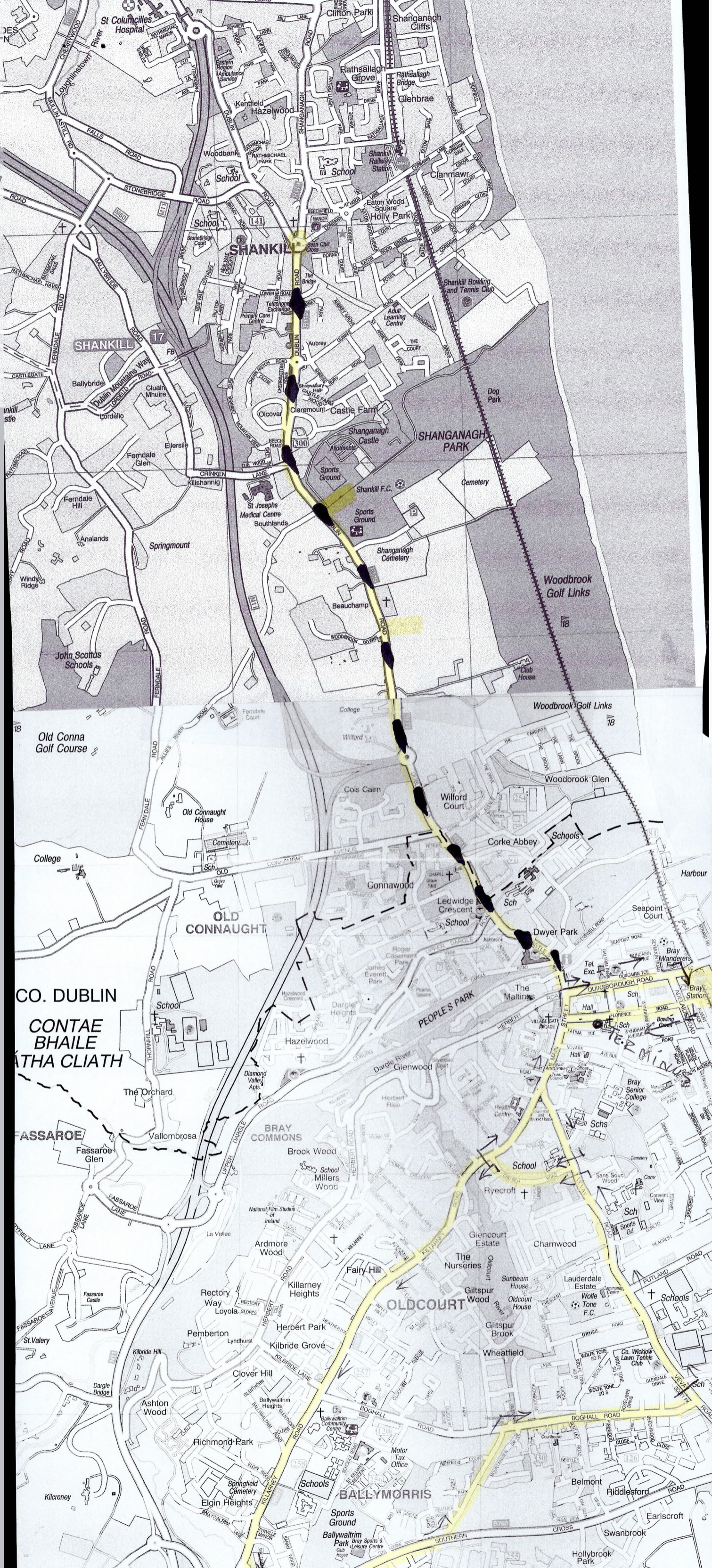
CO. DUBLIN
CONTAE BHAILE
ATHA CLIATH

FASSAROE

BRAY COMMONS

OLDCOURT

BALLYMORRIS



SHANKILL 17

OLD CONNAUGHT

CO. DUBLIN
CONTAE BHAILE
ATHA CLIATH

FASSAROE

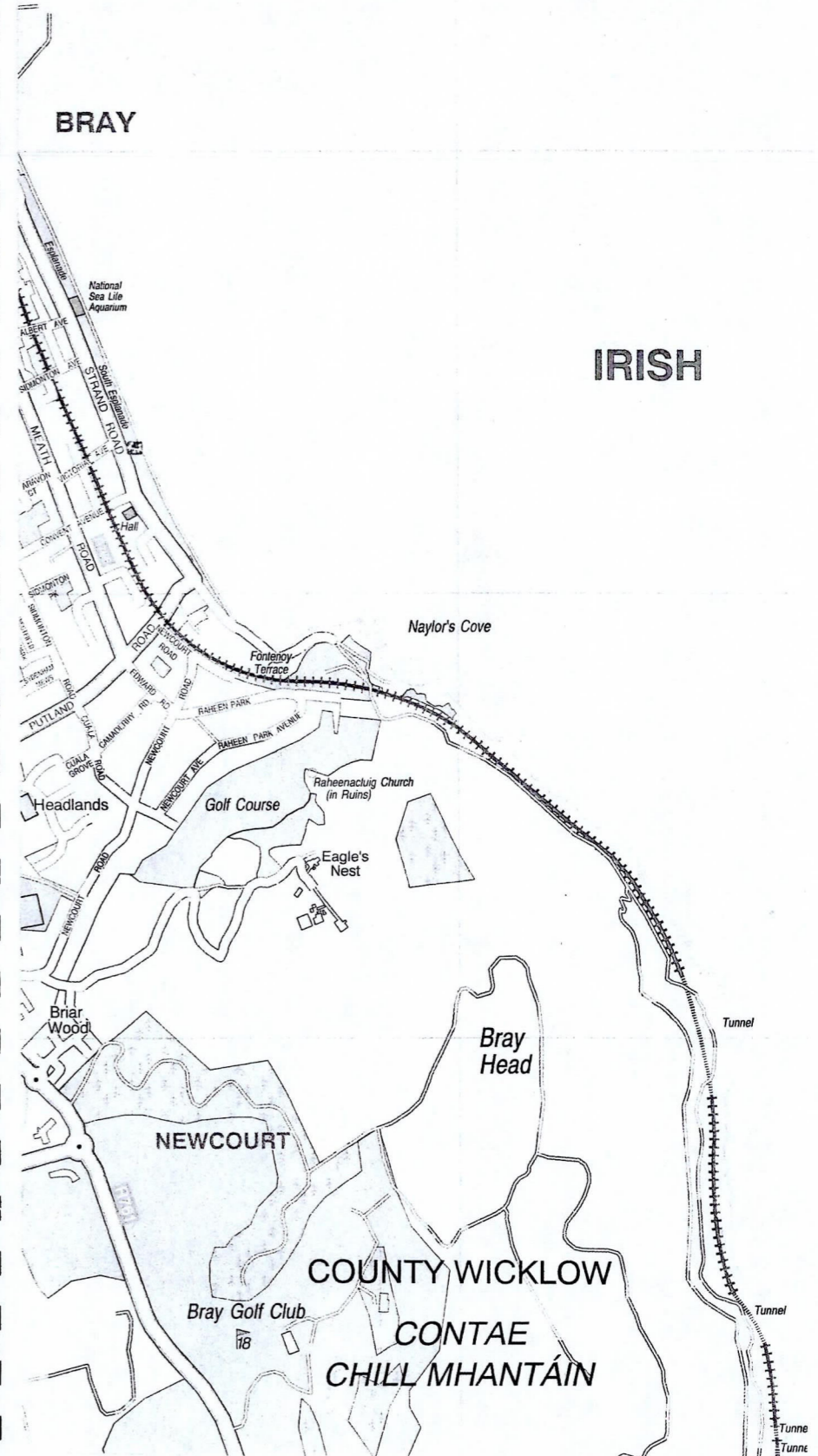
BRAY COMMONS

OLDCOURT

BALLYMORRIS



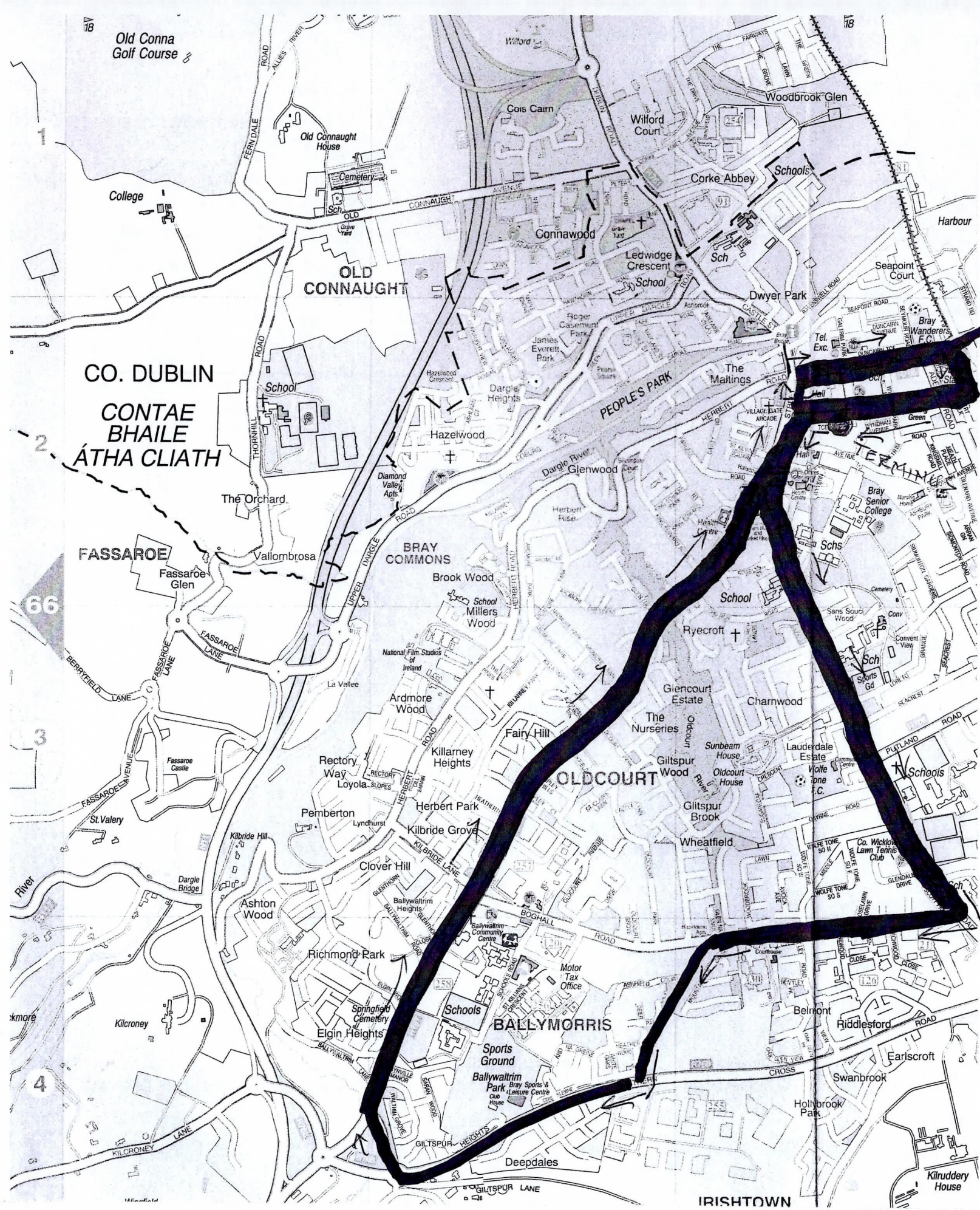
Mooted!
"Round Bray Bus"
Yellow / Anticlockwise



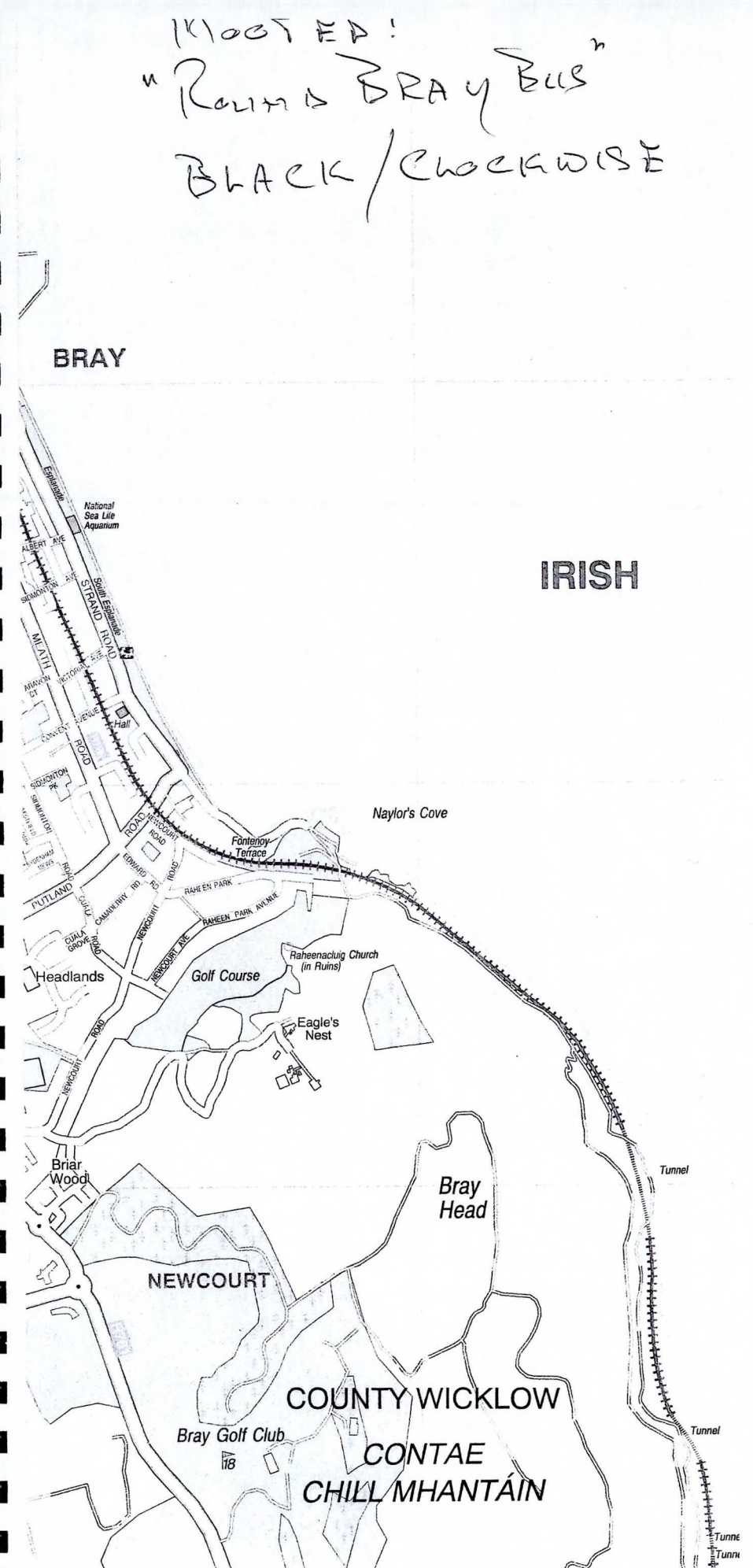
CO. DUBLIN
CONTAE BHAILE
ÁTHA CLIATH

IRISH

COUNTY WICKLOW
CONTAE CHILL MHANTÁIN



ROUTE 1:
"Round BRAY BUS"
BLACK / COUNTERCLOCKWISE



CO. DUBLIN
CONTAE BHAILE
ÁTHA CLIATH

66

4

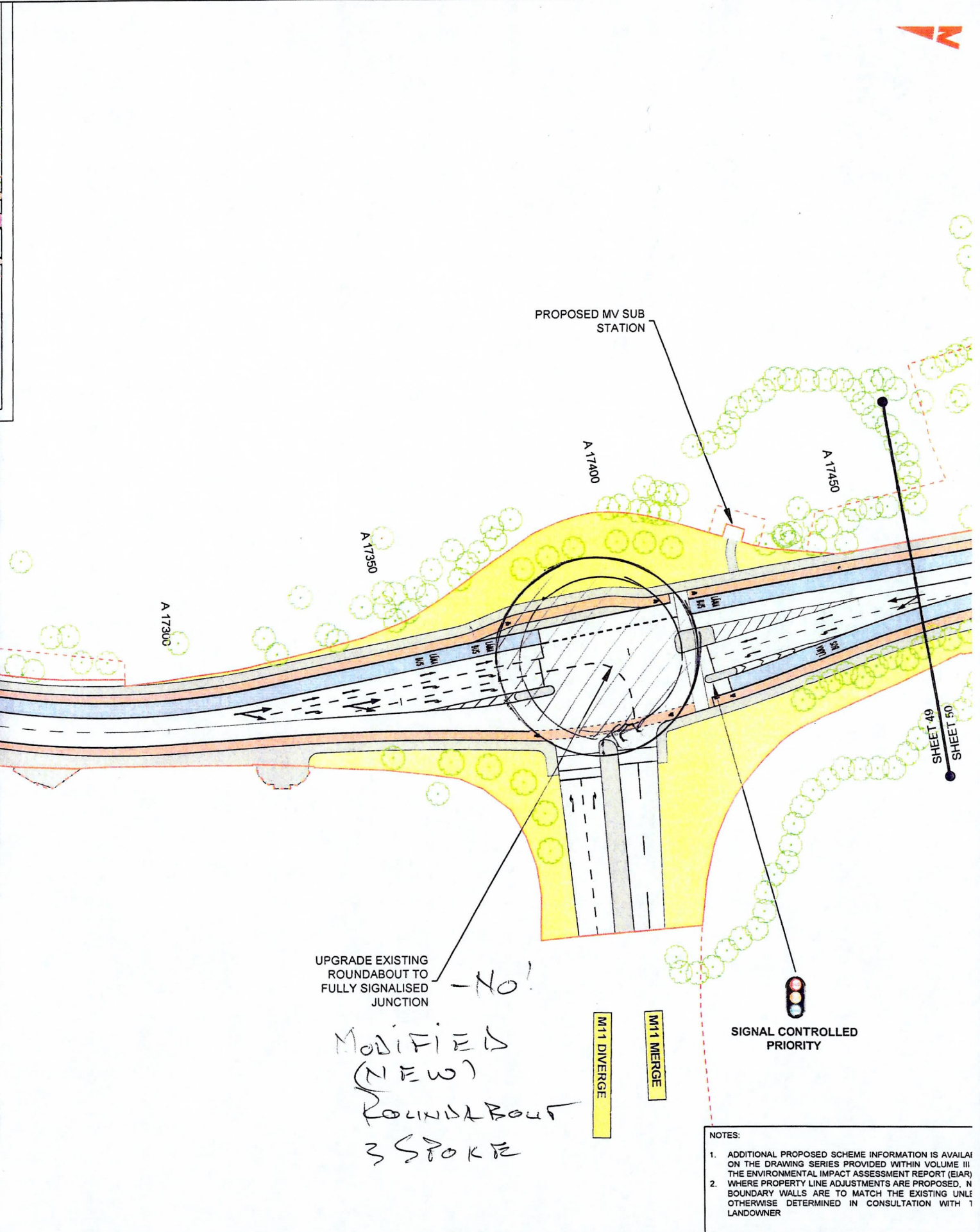
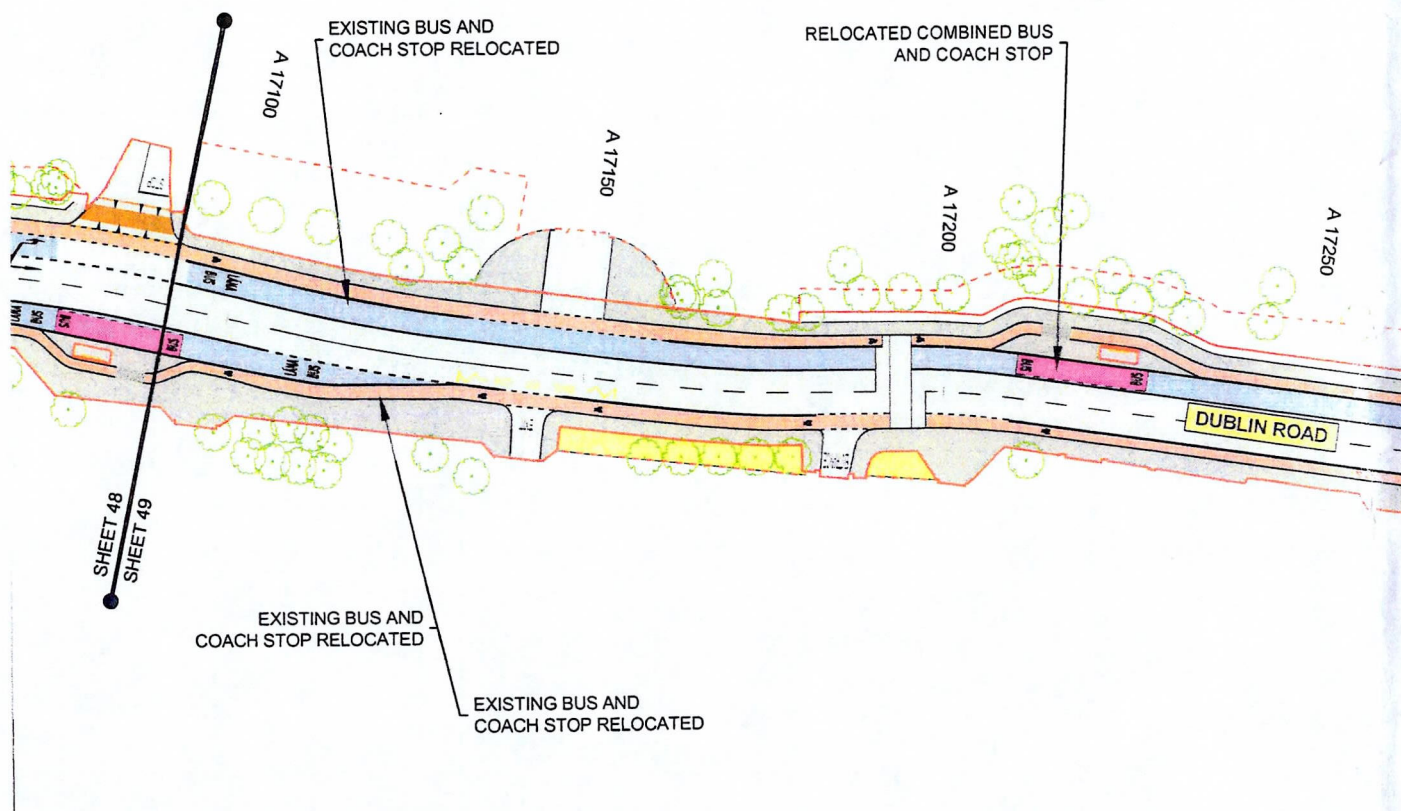
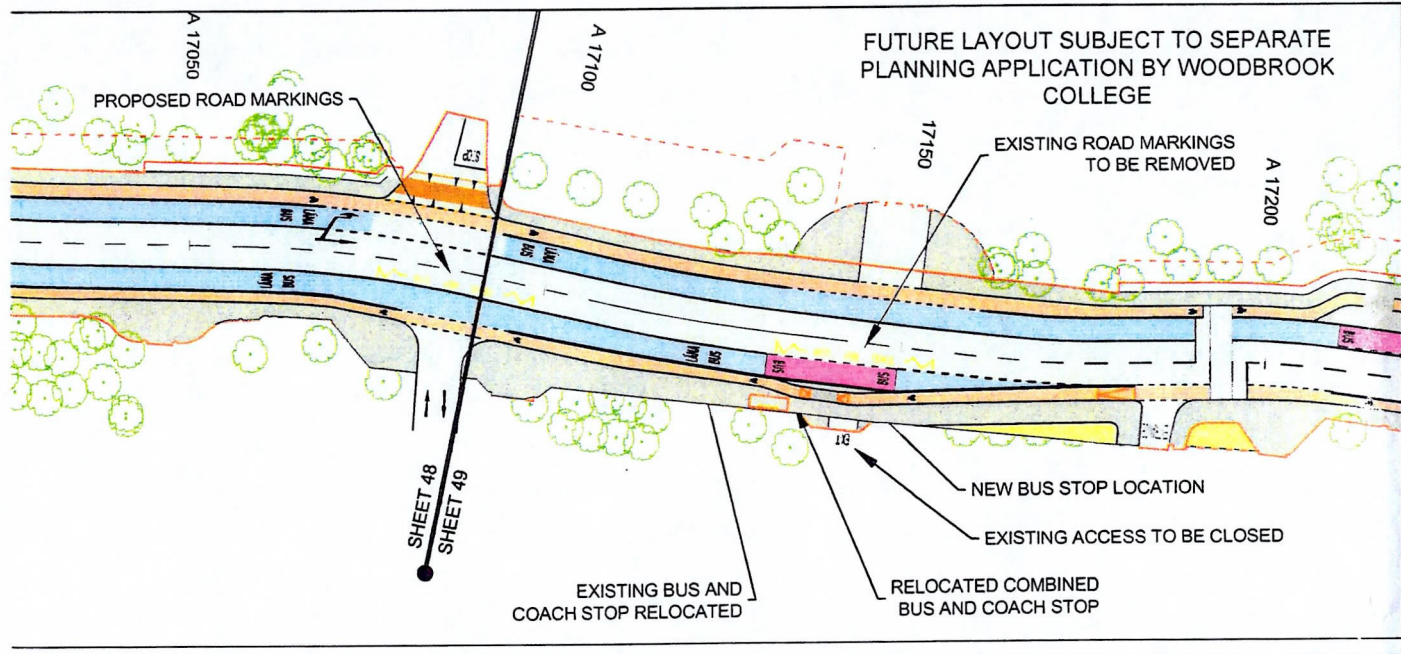
BRAY

IRISH

NEWCOURT

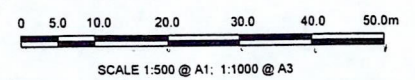
COUNTY WICKLOW
CONTAE CHILLMHANTAIN

IRISHTOWN



LEGEND:

| | |
|--|------------------------------|
| | BUS LANE |
| | CYCLE TRACK |
| | FOOTPATH |
| | CARRIAGEWAY |
| | GRASS AREA / VERGE |
| | PEDESTRIAN PRIORITY ZONE |
| | RAISED TABLE |
| | BUS STOP LOCATIONS |
| | BUS SHELTER |
| | TREE (EXISTING AND PROPOSED) |
| | HERITAGE FEATURES |
| | SITE BOUNDARY LINE |
| | TEMPORARY LAND ACQUISITION |



- NOTES:**
- ADDITIONAL PROPOSED SCHEME INFORMATION IS AVAILABLE ON THE DRAWING SERIES PROVIDED WITHIN VOLUME III THE ENVIRONMENTAL IMPACT ASSESSMENT REPORT (EIA) WHERE PROPERTY LINE ADJUSTMENTS ARE PROPOSED. BOUNDARY WALLS ARE TO MATCH THE EXISTING UNLESS OTHERWISE DETERMINED IN CONSULTATION WITH LANDOWNER

Disclaimers:

© National Transport Authority (NTA) 2023. This drawing is confidential and the copyright is owned by NTA. This drawing must not be either loaned, copied or otherwise reproduced in whole or in part or used for any purpose without the prior permission of NTA.

This drawing is to be used for the design element identified in the title block. Other information shown is to be considered indicative only. The drawing is to be read in conjunction with all other relevant design drawings.

D.S. data used for this drawing are printed under Ordnance Survey Ireland Government of Ireland. All rights reserved. Licence Number 0222/05. NTA, 100 National Transport Authority. All elevations are in metres and relate to OSi Geoid Model (OSGM15) Mean Head. All Co-ordinates are in Irish Transverse Mercator Grid (TM) as defined by OSi active local GPS station.

The information contained herein has been provided by the NTA but does not purport to be comprehensive or final. Recipients should not rely on the information. Neither the NTA nor any of its directors, officers, employees, agents, stakeholders or advisers make any representation or warranty as to, or accept any liability or responsibility in relation to, the adequacy, accuracy, reasonableness or completeness of the information provided as part of this document or any matter on which the information is based (including but not limited to loss or damage arising as a result of reliance by recipients on the information or any part of it). Any liabilities are hereby expressly disclaimed.



| Rev | Date | Drn | Chk'd | App'd | Description |
|-----|------------|-----|-------|-------|-----------------------------|
| M01 | 08/05/2023 | RB | EC | RS | ISSUE FOR PHASE 4: PLANNING |

Client
NTA
Údarás Náisiúnta Iompair
National Transport Authority

Engineering Designer
Jacobs

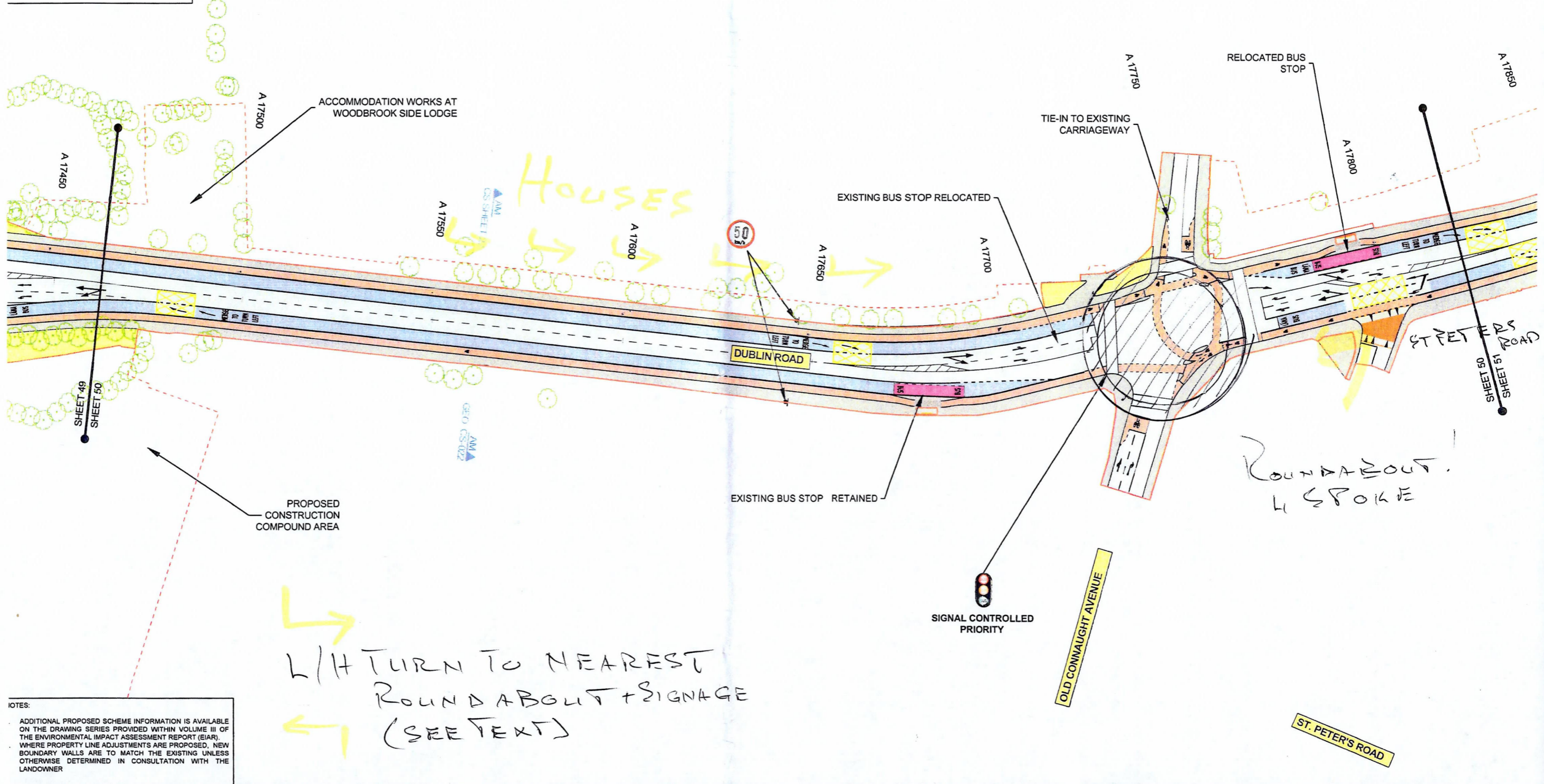
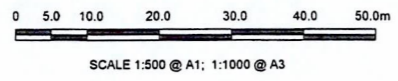
| | | | | |
|--------------|---------------------------|----------|---------|----------|
| Date | Scale | Drawn | Checked | Approved |
| 08/05/2023 | 1:500 @ A1 1:1000 @ A3 | RB | EC | RS |
| Project Code | Originator Code | QMS Code | | |
| BCIDB | JAC | | | |

| | | | | |
|--------------------------------------------------------------------------------------------------|--------------|--------|-----|--|
| Programme Title BUSCONNECTS DUBLIN CORE BUS CORRIDORS INFRASTRUCTURE WORKS | | | | |
| Drawing Title BRAY TO CITY CENTRE CORE BUS CORRIDOR SCHEME GENERAL ARRANGEMENT PLAN | | | | |
| Drawing File Name | Sheet Number | Status | Rev | |
| BCIDB-JAC-GEO_GA-0013_XX_00-DR-CR-0049 | 49 of 54 | A | M0 | |

DO NOT SCALE - USE FIGURED DIMENSIONS ONLY

LEGEND:

| | |
|--|------------------------------|
| | BUS LANE |
| | CYCLE TRACK |
| | FOOTPATH |
| | CARRIAGEWAY |
| | GRASS AREA / VERGE |
| | PEDESTRIAN PRIORITY ZONE |
| | RAISED TABLE |
| | BUS STOP LOCATIONS |
| | BUS SHELTER |
| | TREE (EXISTING AND PROPOSED) |
| | HERITAGE FEATURES |
| | SITE BOUNDARY LINE |
| | TEMPORARY LAND ACQUISITION |



L/H TURN TO NEAREST ROUNDABOUT + SIGNAGE (SEE TEXT)

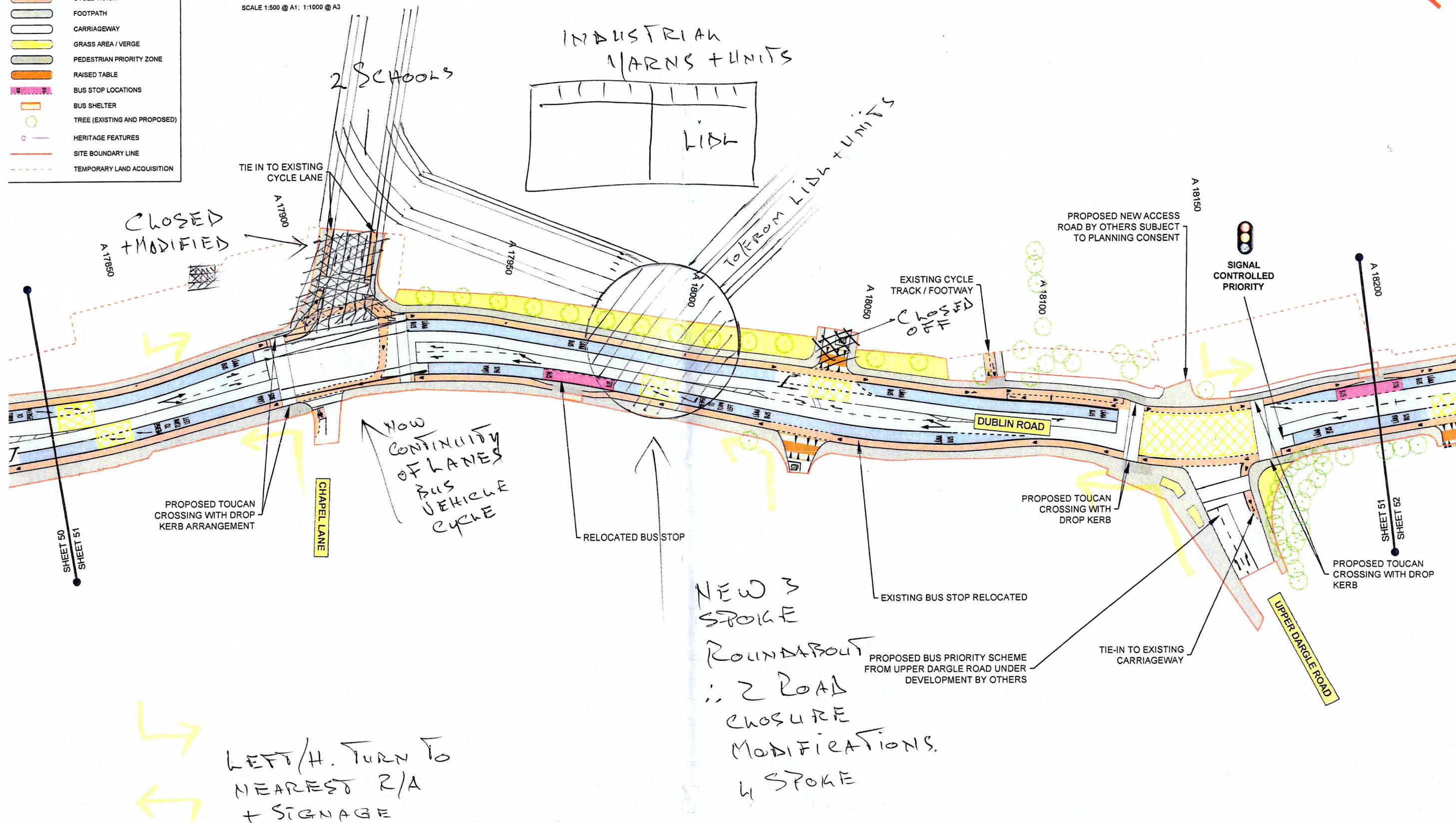
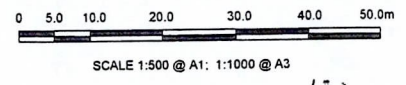
NOTES:
 ADDITIONAL PROPOSED SCHEME INFORMATION IS AVAILABLE ON THE DRAWING SERIES PROVIDED WITHIN VOLUME III OF THE ENVIRONMENTAL IMPACT ASSESSMENT REPORT (EIA). WHERE PROPERTY LINE ADJUSTMENTS ARE PROPOSED, NEW BOUNDARY WALLS ARE TO MATCH THE EXISTING UNLESS OTHERWISE DETERMINED IN CONSULTATION WITH THE LANDOWNER

| | | | | | | | | | | | |
|----------------------------------------------------------------------------------------------------------------------------------------------------------------------------------------------------------------------------------------------------------------------------------------------------------------------------------------------------------------------------------------------------------------------------------------------------------------------------------------------------------------------------------------------------------------------------------------------------------------------------------------------------------------------------------------------------------------------------------------------------------------------------------------------------------------------------|----------------------------------------------------------------------------------------------------------------------------------------------------------------------------------------------------------------------------------------------------------------------------------------------------------------------------------------------------------------------------------------------------------------------------------------------------------------------------------------------------------------------------------------------------------------------------------------------------------------------------------------------------------------------------------------------------------------------------------------------------------------------------------------------------------------------|------------------------------------------------------------------------------------------------------------------------------------------------------------------------------------------------------------------------------------------------------------------------------------------------------------------------------------------------------------------------------------------------------------------------------------------------------------------------------------------------------------------------------------------------------------------------------------------------------------------------------------------------------------------------------------------------------------------------------|-----------------------------------------------------------|----------------------------------------------------|-----------------------------------------|---------------------------------------------------------------------|----------------------------------|---------------------|--------------------------------------------------------------------------------------------|--------------------------------------------------------------------------------------------|--------------------------------------------------------------------------------------------------|
| <p>© National Transport Authority (NTA) 2023. This drawing is confidential and the copyright in it is owned by NTA. The drawing must not be either loaned, copied or otherwise reproduced in whole or in part or used for any purpose without the prior permission of NTA.</p> <p>This drawing is to be used for the design element identified in the title block. Other information shown is to be considered indicative only. The drawing is to be read in conjunction with all other relevant design drawings.</p> <p>O.S. data used for plans are printed under Ordnance Survey Ireland Government of Ireland. All rights reserved. License Number 2022/051, MMA, 180 National Transport Authority. All elevations are in metres and relate to O.S. Geoid Mean (OSGM15) Mean Height. All Coordinates are in Irish.</p> | <p>Transcavo Mosaicor Gnd (TM) as defined by OSI active local GPS station</p> <p>Information concerning the position of apparatus shown on this drawing is based on drawings supplied by the utility owners and/or the utility works contractor, whilst every care has been taken in the preparation of this drawing, positions should be taken as approximate and are intended for general guidance only and no representation is made by the NTA as to the accuracy, completeness, sufficiency or otherwise of this drawing and the position of the apparatus. The information contained herein does not purport to be comprehensive or final as the apparatus is subject to being altered and/or superseded. Recipients should not rely on this information. Any liabilities are hereby expressly disclaimed.</p> | <p>The information contained herein has been provided by the NTA but does not purport to be comprehensive or final. Recipients should not rely on this information. Neither the NTA nor any of its directors, officers, employees, agents, stakeholders or advisers, make any representation or warranty as to, or accept any liability or responsibility in relation to, the adequacy, accuracy, reasonableness or completeness of the information provided as part of this document or any matter on which the information is based (including but not limited to loss or damage arising as a result of reliance by recipients on the information or any part of it). Any liabilities are hereby expressly disclaimed.</p> | <p>Rev M01 08/05/2023 RB EC RS</p> | <p>Date 08/05/2023</p> | <p>Scale 1:500 @ A1 1:1000 @ A3</p> | <p>Drawn RB</p> | <p>Checked EC</p> | <p>Approved RS</p> | <p>Client NTA Údarás Náisiúnta Iompair National Transport Authority</p> | <p>Engineering Designer Jacobs</p> | <p>Programme Title BUSCONNECTS DUBLIN CORE BUS CORRIDORS INFRASTRUCTURE WORKS</p> |
| | | | <p>Project Ireland 2040 Building Ireland's Future</p> | <p>Description ISSUE FOR PHASE 4: PLANNING</p> | <p>Date 08/05/2023</p> | <p>Scale 1:500 @ A1 1:1000 @ A3</p> | <p>Drawn RB</p> | <p>Checked EC</p> | <p>Approved RS</p> | <p>Client NTA Údarás Náisiúnta Iompair National Transport Authority</p> | <p>Engineering Designer Jacobs</p> |
| | | | <p>Project Code BCIDB</p> | <p>Originator Code JAC</p> | <p>GMS Code</p> | <p>Drawing File Name BCIDB-JAC-GEO_GA-0013_XX_00_DR-CR-0050</p> | <p>Sheet Number 50 of 54</p> | <p>Status A</p> | <p>Rev M0</p> | | |

DO NOT SCALE USE FIGURED DIMENSIONS ONLY

LEGEND:

| | |
|--|------------------------------|
| | BUS LANE |
| | CYCLE TRACK |
| | FOOTPATH |
| | CARRIAGEWAY |
| | GRASS AREA / VERGE |
| | PEDESTRIAN PRIORITY ZONE |
| | RAISED TABLE |
| | BUS STOP LOCATIONS |
| | BUS SHELTER |
| | TREE (EXISTING AND PROPOSED) |
| | HERITAGE FEATURES |
| | SITE BOUNDARY LINE |
| | TEMPORARY LAND ACQUISITION |



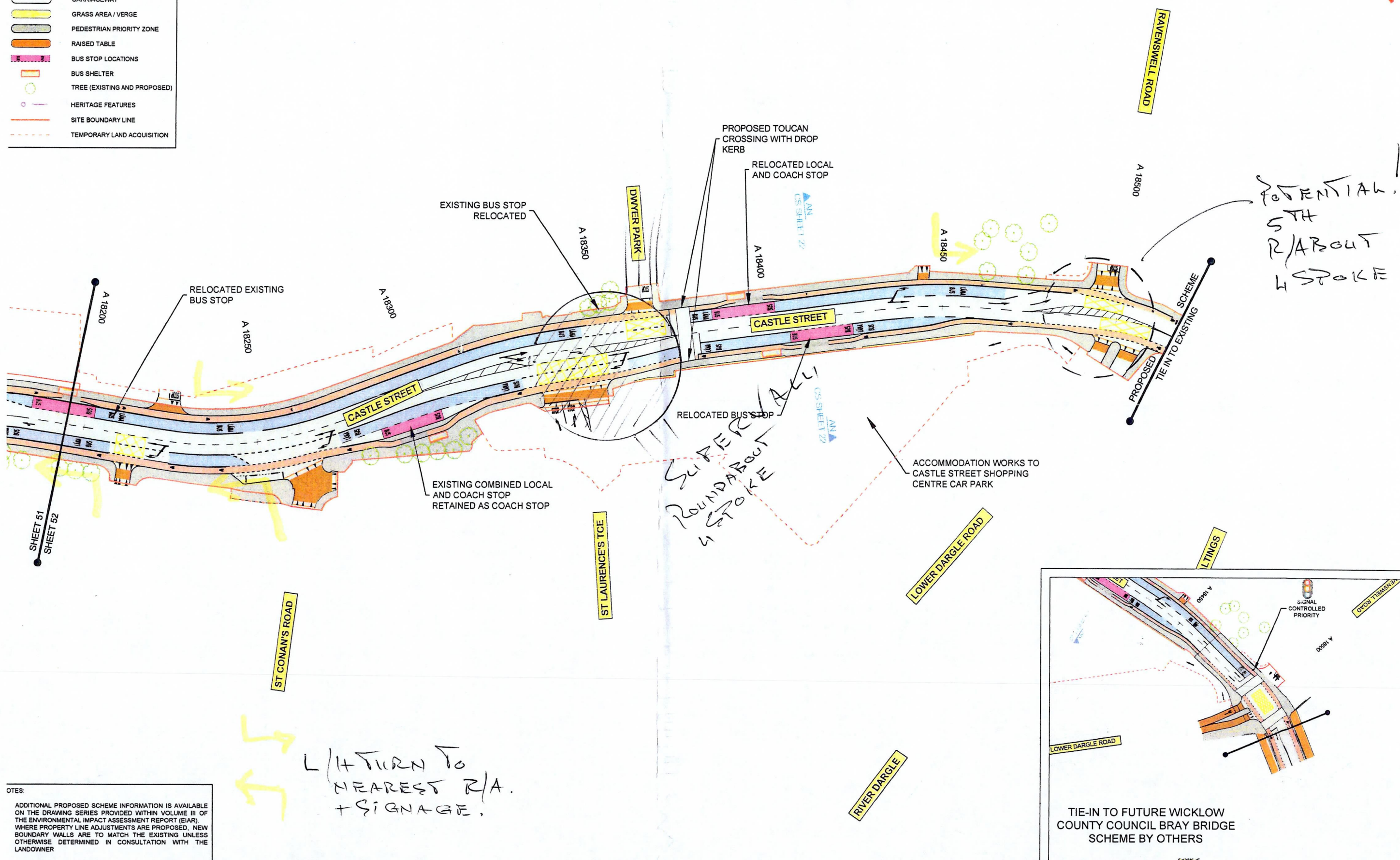
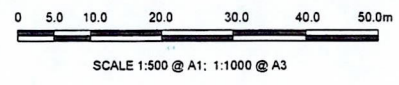
NOTES:

1. ADDITIONAL PROPOSED SCHEME INFORMATION IS AVAILABLE ON THE DRAWING SERIES PROVIDED WITHIN VOLUME II OF THE ENVIRONMENTAL IMPACT ASSESSMENT REPORT (EIA).
2. WHERE PROPERTY LINE ADJUSTMENTS ARE PROPOSED, 1:1 BOUNDARY WALLS ARE TO MATCH THE EXISTING UNITS OTHERWISE DETERMINED IN CONSULTATION WITH LANDOWNER.

| | | | | | | | | | |
|-----------------------------------------------------------------------------------------------------------------------------------------------------------------------------------------------------------------------------------------------------------------------------------------------------------------------------------------------------------------------------------------------------------------------------------------------------------------------------------------------------------------------------------------------------------------------------------------------------------------------------------------------------------------------------------------------------------------------------------------------------------------------------------------------------------------------------------------------------------------------------------------------------------------------------------------------------------------------------------------------------------------------------------------------------------------------------------------------------------------------------------------------------------------------------------------------------------------------------------------------------------------------------------------------------------------------------------------------------------------------------------------------------------------------------------------------------------------------------------------------------------------------------------------------------------------------------------------------------------------------------------------------------------------------------------------------------|--|---------------------------------------------------------------|-------------------------------------------------------|--------------------------------------------------------------------------------|-----------------------------|----------------------------------------------------------------------------------------------|-------------------------------------------------------------------------------------------------------|------------------------------------------------------------------------|-------------------------------------|
| <p>© National Transport Authority (NTA) 2022. This drawing is confidential and the copyright in it is owned by NTA. This drawing must not be copied, reproduced, stored in a retrieval system, or transmitted in any form or by any means, electronic, mechanical, photocopying, recording, or otherwise, without the prior permission of NTA.</p> <p>This drawing is to be used for the design element identified in the title block. Other information shown is to be considered indicative only. This drawing is to be read in conjunction with all other relevant design drawings.</p> <p>C.S. data used for plans are printed under © Ordnance Survey Ireland Government of Ireland. All rights reserved. Licence Number 2022/050, MAA, 1:100 National Transport Authority. All elevations are in metres and relate to OS Grid Model (OSGM15) Mean Head. All Co-ordinates are in Irish Transverse Mercator Grid (TM) as defined by OS active local GPS station.</p> <p>The information contained herein has been provided by the NTA but does not purport to be comprehensive or final. Recipients should not rely on the information. Neither the NTA nor any of its directors, officers, employees, agents, stakeholders or advisors make any representation or warranty as to, or accept any liability or responsibility in relation to, the adequacy, accuracy, reasonableness or completeness of the information provided as part of this document or any matter on which the information is based (including but not limited to loss or damage arising as a result of reliance by recipients on the information or any part of it). Any liabilities are hereby expressly disclaimed.</p> | | <p>Rev Date Dm Chk'd App'd</p> <p>M01 08/05/2023 RB EC RS</p> | <p>Description</p> <p>ISSUE FOR PHASE 4: PLANNING</p> | <p>Client</p> <p>Údarás Náisiúnta Iompair National Transport Authority</p> | <p>Engineering Designer</p> | <p>Programme Title</p> <p>BUSCONNECTS DUBLIN CORE BUS CORRIDORS INFRASTRUCTURE WORKS</p> | | | |
| | | <p>Date</p> <p>08/05/2023</p> | <p>Scale</p> <p>1:500 @ A1 1:1000 @ A3</p> | <p>Drawn</p> <p>RB</p> | <p>Checked</p> <p>EC</p> | <p>Approved</p> <p>RS</p> | <p>Drawing Title</p> <p>BRAY TO CITY CENTRE CORE BUS CORRIDOR SCHEME GENERAL ARRANGEMENT PLAN</p> | <p>Drawing File Name</p> <p>BCIDB-JAC-GEO_GA-0013_XX_00-DR-CR-0051</p> | <p>Sheet Number</p> <p>51 of 54</p> |

DO NOT SCALE USE FIGURED DIMENSIONS ONLY

- LEGEND:**
-  BUS LANE
 -  CYCLE TRACK
 -  FOOTPATH
 -  CARRIAGEWAY
 -  GRASS AREA / VERGE
 -  PEDESTRIAN PRIORITY ZONE
 -  RAISED TABLE
 -  BUS STOP LOCATIONS
 -  BUS SHELTER
 -  TREE (EXISTING AND PROPOSED)
 -  HERITAGE FEATURES
 -  SITE BOUNDARY LINE
 -  TEMPORARY LAND ACQUISITION



NOTES:

ADDITIONAL PROPOSED SCHEME INFORMATION IS AVAILABLE ON THE DRAWING SERIES PROVIDED WITHIN VOLUME III OF THE ENVIRONMENTAL IMPACT ASSESSMENT REPORT (EIAR). WHERE PROPERTY LINE ADJUSTMENTS ARE PROPOSED, NEW BOUNDARY WALLS ARE TO MATCH THE EXISTING UNLESS OTHERWISE DETERMINED IN CONSULTATION WITH THE LANDOWNER

L/H TURN TO NEAREST R/A. + SIGNAGE.

| | | | | | | | | | | | |
|-----------------------------------------------------------------------------------------------------------------------------------------------------------------------------------------------------------------------------------------------------------------------------------------------------------------------------------------------------------------------------------------------------------------------------------------------------------------------------------------------------------------------------------------------------------------------------------------------------------------------------------------------------------------------------------------------------------------------------------------------------------------------------------------------------------------------------------------------------------------------------------------------------------------------------------------------------------------------------------------------------------------------------------------------------------------------------------------------------------------------------------------------------------------------------------------------------------------------------------------------------------------------------------------------------------------------------------------------------------------------------------------------------------------------------------------------------------------------------------------------------------------------------------------------------------------------------------------------------------------------|--|------------------------------------|--|-----------------------------------------------------------------|--|--------------------------------------------|--|--|-----------------------------------------------------------------------------------------------|--|--|
| <p>© National Transport Authority (NTA) 2022. This drawing is confidential and the copyright in it is owned by NTA. This drawing must not be either loaned, copied or otherwise reproduced in whole or in part or used for any purpose without the prior permission of NTA.</p> <p>This drawing is to be used for the design element identified in the title. Other information shown is to be considered indicative only. This drawing is to be read in conjunction with all other relevant design drawings.</p> <p>C.S. data used for plans are printed under © Ordnance Survey Ireland Government of Ireland. All rights reserved. Licence Number 2022/08_MAA_180 National Transport Authority All elevations are in metres and relate to OSG Co-ord Model (OSGM15) Mean Head. All Co-ordinates are in Irish Transverse Mercator Grid (TM) as defined by OSI active local datum.</p> <p>The information contained herein has been provided by the NTA but does not purport to be comprehensive or final. Recipients should not rely on the information. Neither the NTA nor any of its directors, officers, employees, agents, subcontractors or advisers, make any representation or warranty as to, or accept any liability or responsibility in relation to, the adequacy, accuracy, reasonableness or completeness of the information provided as part of this document or any matter on which the information is based (including but not limited to loss or damage arising as a result of reliance by recipients on the information or any part of it). Any liabilities are hereby expressly disclaimed.</p> | | <p>Rev M01 08/05/2023 RB EC RS</p> | | <p>Client: NTA Ódara Náisiúnta Iomairt Náisiúnta</p> | | <p>Engineering Designer: Jacobs</p> | | | <p>Programme Title: BUSCONNECTS DUBLIN CORE BUS CORRIDORS INFRASTRUCTURE WORKS</p> | | |
| <p>Project Code: BCIDB</p> | | | | <p>Date: 08/05/2023</p> | | <p>Scale: 1:500 @ A1 1:1000 @ A3</p> | | | <p>Drawing File Name: BCIDB-JAC-GEO-0013_XX_00-DR-CR-0052</p> | | |
| <p>Project Code: BCIDB</p> | | | | <p>Originator Code: JAC</p> | | <p>Drawn: RB</p> | | | <p>Checked: EC</p> | | |
| <p>Project Code: BCIDB</p> | | | | <p>Originator Code: JAC</p> | | <p>Approved: RS</p> | | | <p>Sheet Number: 52 of 54</p> | | |
| <p>Project Code: BCIDB</p> | | | | <p>Originator Code: JAC</p> | | <p>QMS Code:</p> | | | <p>Status: A</p> | | |
| <p>Project Code: BCIDB</p> | | | | <p>Originator Code: JAC</p> | | <p>QMS Code:</p> | | | <p>Rev: M01</p> | | |

DO NOT SCALE USE FIGURED DIMENSIONS ONLY